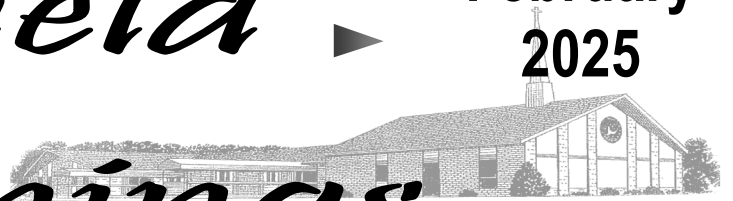


# Highfield Happenings

February  
2025



ANNOUNCEMENTS

**Celebrating God's Gift of Life**—Your birthday is God's gift of life to you, so let's celebrate!

Starting this month, a table will be set up in the narthex—those of you born in January, bring a picture of yourself—childhood, graduation, marriage, etc. Put your name of it and place it on the table. Have a loved one whose birthday was in January? Bring a picture! Have a child, grandchild, pet whose birthday is in January? Bring a picture for all to see and let's celebrate God's gift of life.

In February, our table will celebrate February birthdays. Get the picture?? May your memories be sweet!

*In Sympathy*—We express our deepest sympathy to the family of Brooks Breakey who died on Thursday, January 9.

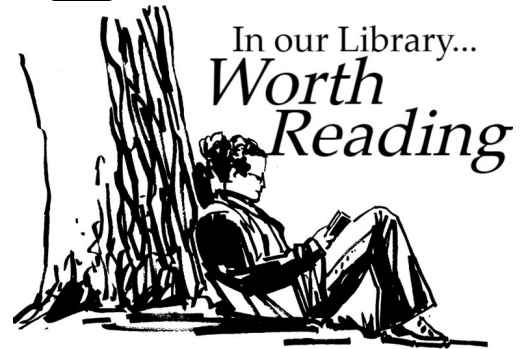
"I am the resurrection and the life," says our Lord. "Those who believe in me, even though they die, will live, and everyone who lives and believes in me will never die." (John 11:25-26, NRSV).

### Memorial Gifts

Monetary gifts were given in memory of Robert Slicker

Thank you for allowing us to rent the church for Taylor's birthday party! She had a great day.

Thanks again,  
Dustin, Shelby, + Taylor  
Riggle



In our Library...  
**Worth  
Reading**

**HIS & HERS** by Alice Feeney

Do you like to read a good "whodunit"? Do you figure out the murderer before the end? In this novel, the setting is in rural England, not far from London. A woman is murdered. The murder draws the attention of the BBC so a reporter and cameraman are sent from London to keep the viewers up to date. Then, there is another woman murdered! Is there a connection?

A decades old photo is discovered. There were 5 schoolgirls in the photo. There are now only 3 of them alive. The detective knows there will be another murder and tries to warn the three women.

Is the murderer Jack, Anna, Priya, Richard or Zoe? Or none of them? Who then?



**Love one  
another.**

1 JOHN 4:7

**St. Paul's Highfield Lutheran Church**  
Congregation of the Southwestern PA Synod  
Evangelical Lutheran Church in America  
1595 Dime Road, Vandergrift, PA 15690  
Phone: 724.567.7462  
Email: [hifielts@comcast.net](mailto:hifielts@comcast.net)  
[www.stpaulshighfield.org](http://www.stpaulshighfield.org)



## **Vision Statement**

Spreading the good news of Jesus Christ by living out our faith in worship, support, and service to all people.

## **Mission Statement**

**SPHLC—**

**Spiritual  
People  
Helping  
Lead others to  
Christ**

## **Parish Staff**

Reverend Christine Bridge—Interim Pastor  
217 Meadow Lane  
Murrysville, PA 15668  
Office: 724-567-7462  
Cell: 848-467-6556  
Email: [darluz223@yahoo.com](mailto:darluz223@yahoo.com)

Gregg LeMay—Director of Music  
724-567-7462

Clarence Brown—Financial Secretary  
724-567-5571

Nicole Ashbaugh—Sexton  
724-842-7376

Janine Ballish—Secretary / Treasurer  
724-567-7462

Office hours: Wednesdays and Fridays  
9:00 am-3:00 pm

*Hours are subject to change for holidays,  
etc.*

*If you have questions  
or concerns, please  
discuss them with one  
of the members listed  
below.*

---

**Pam Neale   Patty Biss  
Robin Stoltz   Bill McGinnis  
Chris Cominos  
Gerry LeMay   Nicole Ashbaugh  
Judy Grinder   Allen Leard**

---



*“Surely He taught us to **love** one another. His law is **love** and His gospel is **peace**.”*

*--from the 3rd verse of “O Holy Night”*

*“You shall **love** the Lord your God with all you heart and with all your soul, and all your might, and your neighbor as yourself.”--Jesus*

*“In so far as it depends on you, live peaceably with all.” Romans 12:18*

*“Where love thrives, so does peace.”---anonymous*

**L**ove and peace to you all this February!! I hope that those of you who have a birthday in February will bring in a picture of yourself to place on the “It's My Birthday Month Table in the narthex. Remember, you may also bring a picture of a loved one whose birthday is (was) in February, and don't forget your pets. If you don't know when they were born, use the month they entered your home as part of your family. Enjoy looking through the pictures and savor the good times. Besides, what else are you going to do on a cold, snowy evening?!

Most of us first experienced love within our family. Most of us, although sadly not all, learned that home was where warmth, shelter, and familial bonds where forged. I grew up with my Mom, Dad, and my brother, who was 3 years younger than me. I remember daily family dinners, board games on Sunday evenings, and lots of time with aunts, uncles, and cousins. Love reigned and so did peace. Sure, there were disagreements and sometimes harsh words, but forgiveness was also the fabric of our life together, and eventually, peace would reign again.

It was also at home that I learned about God and His love for all of creation---all creatures, great and small....and yes, love for me....a little child. Later, as I grew up attending Sunday School, Sunday Worship, VBS, Luther League, and 1 week at Camp Lutherlyn for 8 summers, I came to realize that:

*“God so loved the world that He gave His only Son, that whoever believes in Him will not die, but have life everlasting. God did not send the Son into the world to condemn it, but that the world might be saved through Him.” John 3: 16-17*

This is LOVE---selfless, pure, peaceful love. Love poured out to each of us. Claim it....make it yours!

With love and prayers,  
Pastor Chris

*The Rev.  
Christine A. Bridge*

# STEWARDSHIP

## Contributions



### GIVING VS. BUDGET FIGURES 2024

**NEED \$1,741.13 WEEKLY TO BREAK EVEN**

	<b>CURRENT DEPOSIT</b>	<b>NEEDED</b>	<b>OVER / (SHORT)</b>	<b>YTD OVER/(SHORT)</b>	<b>ATTENDANCE</b> In person/online
January	\$7,135.00	\$7,018.48	\$116.52	\$116.52	216 / 26
February	\$8,061.00	\$7,018.48	\$1,042.52	\$1,159.04	220 / 11
March	\$9,742.00	\$8,773.10	\$968.90	\$2,127.94	312 / 16
April	\$7,169.00	\$7,018.48	\$150.52	\$2,278.46	214 / 15
May	\$7,249.00	\$7,018.48	\$230.52	\$2,508.98	238 / 21
June	\$7,231.00	\$8,773.10	\$(1,542.10)	\$966.88	256 / 17
July	\$5,782.00	\$7,018.48	\$(1,236.48)	\$(269.60)	159 / 6
August	\$5,509.00	\$7,018.48	\$(1,509.48)	\$(1,779.08)	193 / 12
September	\$12,183.00	\$8,773.10	\$3409.90	\$1,630.82	240 / 19
October	\$4,030.00	\$7,018.48	\$(2,988.48)	\$(1,357.66)	153 / 10
November	\$8,221.20	\$7,018.48	\$1202.72	\$(154.94)	207 / 16
December	\$10,368.00	\$8,773.10	\$1,594.90	\$1,439.96	263 / 18

The above totals do not include any designated giving for specific ministries.

They only include the money given to support the 2024 budget.

If you have any questions, please call me ~ *Janine Ballish, Treasurer*

## STEWARD HEALTHY RELATIONSHIPS

There's no escaping love in February, is there? Everywhere – valentines, red roses, heart-shaped candy boxes and other sweets for the ones we love.

This is all good and right, because ever since God declared that it is not good for a person to be alone (Genesis 2:18), people have found comfort, excitement, safety, companionship, joy, contentment and fulfillment in the company of others.

That's why February is perfect for celebrating healthy, loving relationships of all sorts. Good stewards care for every gift God gives us – healthy, loving relationships especially. And because Jesus commanded us to love our neighbors and our enemies alike, we do well to work on relationships beyond our immediate circles.

Suggestions:

**Couples:** Give flowers and chocolate, sure, but also spend quality time with one another. Talk deeply and listen intently. Pray and read scripture together. Hold hands during worship. Talk often and listen deeply. Read Gary Chapman's "The 5 Love Languages" together.

**Families:** Rejoice in the love that holds you together – parents, grandparents, children, siblings, cousins – everybody. Organize Sunday family dinners. Say, "I love you." Talk through problems and work together.

**Friends:** Enjoy time with buddies, but also cultivate deeper and more-spiritual friendships. Share problems and successes. Grow together in faith.

**Church neighbors:** Send friendship valentines to everybody in church. As a congregation designate "love your neighbor" Sunday at which you have a potluck. And/or movie night or game night.

**Community neighbors:** Send a valentine and a piece of candy to immediate neighbors – or everybody in your address book to let them know that friendships and neighbors are important. Start, or revive, block parties, community cleanup days, yard sales or fellowship gatherings.

God gives us relationships of all kinds so that we can have companionship, friendship, security and joy. As stewards of all that God gives us, we can nourish and celebrate healthy, strong relationships.

--Rev. Rob Blezard

Copyright © 2017, 2025, Rev. Robert Blezard. Reprinted by permission. Pastor Blezard serves as pastor of St. Paul's Lutheran Church, Aberdeen, MD, and works as web editor for [www.stewardshipoflife.org](http://www.stewardshipoflife.org).



In 1990, Souper Bowl of Caring began with a simple prayer from a single youth group:

**"Lord, even as we enjoy the Super Bowl football game, help us be mindful of those without a bowl of soup to eat."**

Since then, close to \$200 million has been generated for local charities across the country through Souper Bowl of Caring. It has become a powerful movement that transforms the time around the Big Game into the nation's largest celebration of giving and caring for those in need.

Through this mission, people learn they can make a positive difference in the world as they collect food, raise money and serve at hunger-relief charities and show caring and compassion in local communities across the country.

Share in God's love for our neighbors in need and give generously on Souper Bowl Sunday. All of the donations collected will go directly to our Tackle Hunger Charity of Choice:

**On Sunday, February 9, we will be collecting food and monetary donations for our food pantry.**

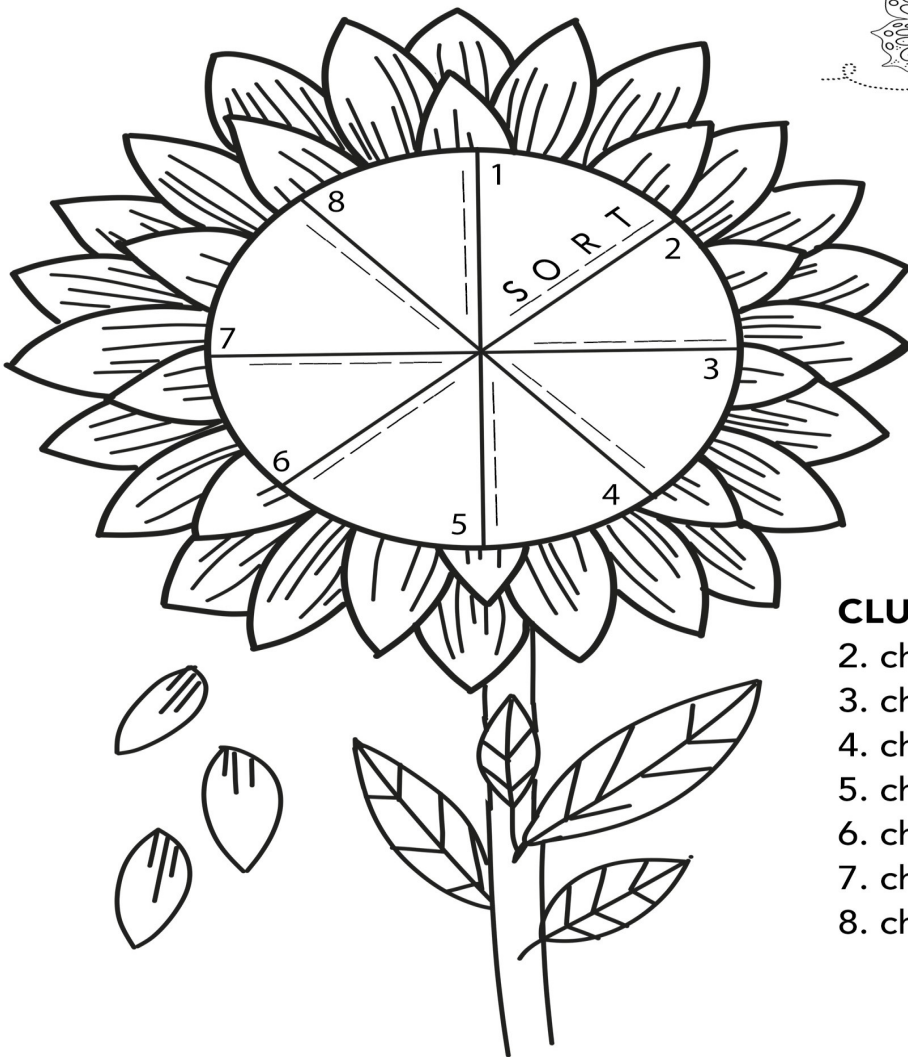
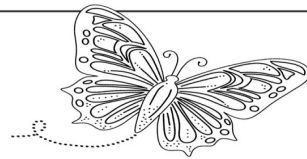
**To learn more, visit: [TackleHunger.org](http://TackleHunger.org)**



# THE LOVE CYCLE

In 1 John 4, God instructs us to love other people. Where does our love come from?

*Directions: Starting at #1 and going clockwise, solve each clue to create a new four-letter word. Then write the eighth word in both blanks below to complete 1 John 4:19, NIV.*



We \_\_\_\_\_  
because [God] first  
\_\_\_\_\_d us.

1 John 4:19, NIV

### CLUES

- 2. change 1 letter: a tent to play in
- 3. change 2 letters: a crease in paper
- 4. change 1 letter: a precious metal
- 5. change 2 letters: a beautiful dress
- 6. change 1 letter: opposite of up
- 7. change 2 letters: a type of bird
- 8. change 1 letter: God is this  
(see 1 John 4:16).

Answers: fort, fold, gown, dove, love; We love because [God] first loved us. 1 John 4:19, NIV



Keystone Family  
Alliance  
PO Box 255  
Millheim, PA 16854

December 10, 2024

Dear Champion for Children,

Imagine a young child, scared and alone, entering the foster care system. They've been removed from their home due to no fault of their own and now face an uncertain future. They yearn for stability, safety, and a sense of belonging. This story is not uncommon across the state. There are children in this county facing the same circumstances and they need your help. There's a constant need for more families willing to open their homes and hearts to children who need safety and stability at a time when their parents are unable to give it. Even then, foster families often feel overwhelmed and isolated when adding children who have experienced significant trauma to their care.

Without significant support, **50% of foster families quit within their first year.** This can lead to children moving from home to home, disrupting their lives, and making it harder for them to heal. At Keystone Family Alliance, we're committed to changing these realities. We are dedicated to bringing awareness to the needs within the child welfare system and motivating others to care for vulnerable children and families.

But our efforts don't stop there. We believe in the power of community which is why we partner with churches and individuals in our vision to provide more than enough homes and more than enough support for children and families across the state. **Everyone can do something** and we want to help you find YOUR something.

**With your support, we can:**

- **Recruit:** Bring awareness to the need for more foster homes. More available foster families make it less likely for children to be moved out of their county when removed from their homes, sibling groups have a better chance of staying together, and children are less likely have to spend a night in the CYS office with staff until a suitable home can be found.
- **Connect foster families with support networks:** We partner with local churches to form teams of volunteers called Care Communities to support families as they navigate the complexities of fostering. Volunteers support foster families through prayer, meals, transportation, childcare, and other household duties. This ensures that these families receive the assistance they need to care for the children in their homes empowering them to foster longer and stronger.
- **Meet tangible needs in the community:** Caseworkers post needs into our online portal, Gateway, where individuals who have signed up are notified when

new needs are posted. Meeting these needs can help reunify or keep a biological family together, help a foster family with items needed for a new placement, etc.

Since Keystone Family Alliance came to Armstrong County in November of 2023, we have been blessed with four official church partners (and counting) who are currently training teams to start supporting local families. We also have a mixture of 68 individuals and churches signed up to receive notices on Gateway, and 163 followers in our Facebook group who see those needs as well. Over the past year, we have been able to supply many household items to families across the county. We cannot do what we do without the grace of God and the outpouring of love from individuals in our community. Keystone Family Alliance also continues to grow statewide, launching into more counties across Pennsylvania. **People just like you, and churches just like yours are making a positive impact on the child welfare system!**

Will you help to create a world where every child has a safe and loving home, a place where they can heal, grow, and thrive? Consider making a donation to help bridge the gap between the needs in the child welfare system and churches in our community. **Your contribution, no matter the size, can change the trajectory of a child's life and strengthen the entire community.** Your gift of:

- **\$500** can help launch Care Communities at a new church
- **\$250** can help launch independent Care Communities
- **\$50** can promote Gateway to a church or an agency

If you are a monthly donor or have recently made a donation, we thank you! If you have not, **will you join others in sending a special year end gift?** You can find monthly and one time giving options online by visiting [keyfam.org/donate](https://keyfam.org/donate). Checks can be made payable to "Keystone Family Alliance" and mailed to PO Box 255, Millheim PA, 16854. Please put "Armstrong County" in the designation online or in the memo of your check.

Thank you for your compassion, generosity, and support.  
**Together, we can make a difference.**

Sincerely,

Maggie Lewis-Smith  
Armstrong County Coordinator

P.S. Did you know that Keystone Family Alliance **accepts more than just gifts of cash? Qualified Charitable Distributions (QCD)**, are gifts made directly from individual IRA accounts without increasing your taxable income. Capital gifts of appreciated assets - such as stocks or mutual funds in an investment portfolio are also accepted. If you'd like to learn more about making a direct gift to KFA with one of these options, please contact us at [donate@keyfam.org](mailto:donate@keyfam.org) for more information.

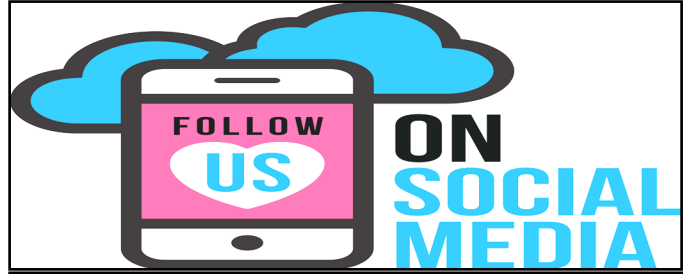


## FOOD BANK ITEMS

Below is a complete list of items for you to keep at home of the items that our food bank needs:

Thank you in advance for any help you can offer.  
God Bless—"The Food Bank Club"

Boxed or canned potatoes	Canned vegetables—corn, peas, green beans
Canned fruit	
Pasta & Pasta sauce	Canned soup—tomato, chicken noodle, vegetable beef
Cereal	
Macaroni & Cheese	Peanut butter & Jelly
Rice mixes	Toilet paper
Canned tuna, chicken or ham	Paper towels
Canned baked beans or kidney beans	Hygiene products - toothpaste, soap, etc



Besides in person, you can join us for a live stream on Sunday mornings at 9:00 am on:



St. Paul's Highfield Lutheran Church



By phone, dial 646-558-8656.  
Enter the meeting ID number 632 238 2087, followed by the pound sign (#) twice.  
Enter the password 632 238 2087.



### @ ST. PAUL'S HIGHFIELD

Don't forget to include our confined members in your prayers. Names, addresses, and birthdays are listed below.

**Jean and Linda Bozzarelli**  
(February 27, October 2)  
112 Oregon Avenue  
Vandergrift, PA 15690

**LaRue Ciuca**  
1147 Crawford Avenue  
Vandergrift, PA 15690

**Martha Abarbanell**  
(May 31)  
1166 Pleasant View Drive  
Vandergrift, PA 15690

**Sylvia Powell**  
Quality Life Services  
151 Goodview Drive  
Apollo, PA 15613

**Kathye Schaeffer**  
(December 29)  
Quality Life Services  
151 Goodview Drive  
Room #318  
Apollo, PA 15613

**Evelyn McGuire**  
(August 2)  
Concordia Lutheran  
Ministries  
615 North Pike Road  
Building 4, Room 2306  
Cabot, PA 16023

All are welcome to join us

---

Join us for worship  
Sunday Mornings  
9:00 am in person and online  
(Facebook & Zoom)



**St. Paul's Highfield Lutheran Church**  
1595 Dime Road  
Vandergrift, PA 15690

---

Nonprofit Org.  
U.S. Postage  
PAID  
Vandergrift PA  
Permit No. 31

---